

# Centre 88



## Training and Meeting Room Hire



# Contents



<b>Page 3</b>	Centre 88
<b>Page 4</b>	Our Rooms <ul style="list-style-type: none"><li>Conference Room 1</li><li>Conference Room 2</li><li>Meeting Room</li></ul>
<b>Page 7</b>	Room Layout
<b>Page 9</b>	Room Features
<b>Page 11</b>	Refreshments and Catering
<b>Page 13</b>	Accessibility and Parking
<b>Page 14</b>	Our Location

# Centre 88



Situated close the city centre, but also within easy access to major road networks, Centre 88 provides meeting room facilities in a convenient location for both local delegates and those travelling from outside the city.

With two multifunctional rooms both situated at ground floor level, Centre 88 provides fully accessible facilities that are available for hire during the day or evening for a range of activities.



Both rooms can be equipped with a range of facilities to accommodate your meeting or training needs, and refreshments along with a full buffet service can also be provided.

# Our Rooms



## Conference Room 1

Conference Room 1 holds up to 50 people and can be arranged into all our available layouts.

The room enjoys natural light and is equipped with internet access, a hearing loop and screen. Additional facilities can also be made available in this room.



## Conference Room 2

Conference Room 2 holds up to 50 people and can also be set up in all layouts.

This room also has natural light and is equipped with internet access, a screen, projector, hearing loop and lectern with multi media functions.

# Our Rooms

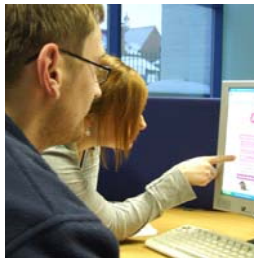


## Meeting Room

Centre 88 also has a small meeting room available which is suitable for use by two or three people, and can be hired on an hourly basis..

## Other Facilities/Meeting Space

From time to time we may be able to make additional spaces available, including a computer room that has 10 internet ready PCs. We will be happy to discuss your requirements and propose solutions to meet your needs.



A rate card for the hire of each of our rooms can be found on the enclosed Room Hire Rates insert.

foto

foto

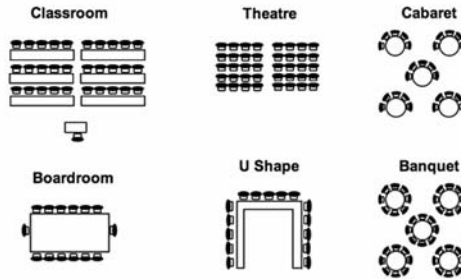
foto

foto



# Room Layout

The following room layouts are available:



	Conference Room 1	Conference Room 2	Meeting Room
Classroom	24	24	-
Theatre	50	50	-
Cabaret	30	30	-
Boardroom	24	24	-
U Shape	20	20	-
Banquet	36	36	-





# Room Features

Our rooms come with a number of built in features as outlined below:

	Conference Room 1	Conference Room 2	Meeting Room
Natural light	✓	✓	✓
Wheelchair access	✓	✓	✓
Induction loop	✓	✓	×
Internet access	✓	✓	×
Screen	✓	✓	×
Digital projector	×	✓	×

The following portable equipment is also available if required:

- Laptop
- Digital Projector
- TV
- Vide/DVD Player
- Flipchart stand
- White board
- Lectern
- Additional screens

fotolia

fotolia

fotolia

fotolia

fotolia

fotolia

fotolia

fotolia



# Refreshments and Catering



Centre 88 works with two local caterers to offer a variety of catering options that can accommodate all tastes, dietary requirements and budgets.

Refreshments are available throughout the day or room in our conference room kitchen area, and food can be served in all of our meeting rooms for a working lunch meeting.



Please see our Catering insert for menu options and prices.



# Accessibility and Parking



Centre 88 is fully accessible and has disabled parking facilities on site. Access to all floors is available by means of a lift and hearing loops are provided in both of our conference rooms



Free parking is available on site, plus on street parking is available on adjacent Saner Street and Ena Street.

# Our Location



**Centre 88  
Saner Street  
Anlaby Road  
Hull  
HU3 2TR**

Centre 88 is situated on Saner Street, off Anlaby Road, which runs directly into the city centre with easy access to the Railway station and Hull Interchange.

## **By Bus:**

Anlaby Road is situated on a major bus route with services 2, 35, 62, 64, 66, 151, 152, 153, 154, 155 and 350 running frequently along this road.

## **By Train:**

Exit the Railway station via the rear exit and turn right. Follow the road for approximately 1 mile then take the last left hand turning before the flyover. Turn left again and Centre 88 can be found immediately on the right.

**By Car:**

From the M62 continue into Hull on the A63 along Clive Sullivan Way. Exit at signs for the Infirmary and then continue on until the roundabout. At the roundabout take the second exit on to Rawling Way. Turn left at the junction with Anlaby Road (opposite Hull Royal Infirmary), then take the third left on to Saner Street (exit immediately before the flyover). Turn left again and Centre 88 can be found immediately on the right.

For more information contact us:



Hull CVS

*'community and voluntary services'*

tel 01482 324541

fax 01482 223574

email [events@hull-cvs.co.uk](mailto:events@hull-cvs.co.uk)

office Centre 88  
Saner Street  
Hull  
HU3 2TR

website [www.hullcvs.org.uk/Centre 88](http://www.hullcvs.org.uk/Centre 88)



Project Part-Financed  
by the European Union  
European Regional  
Development Fund



NAVCA  
Quality  
Award



Volunteer Centre  
Hull